



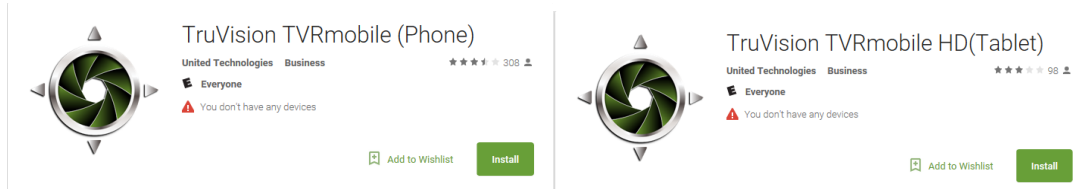
# Connecting your Smart Device to your CCTV System for remote viewing

You will need to purchase the free app from the app store for your device.

iPhones/iPads Devices:



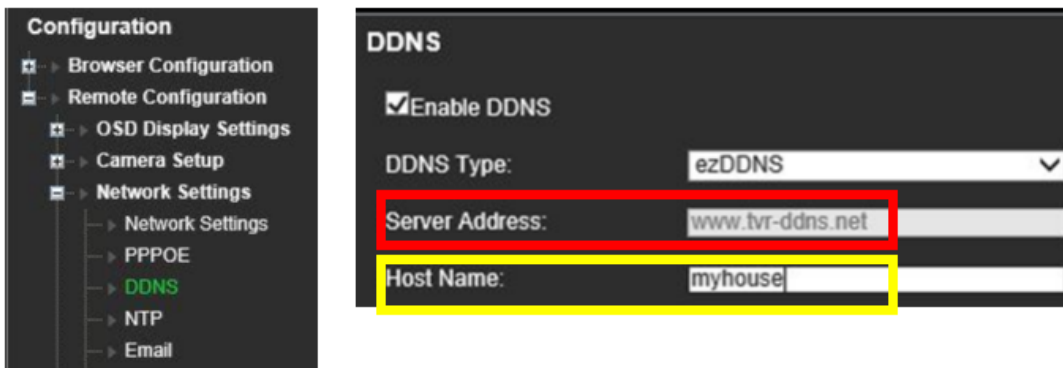
Android Devices:



You will also need to know the Host Name of your recorder.

Logging into you recorder directly with your user name and password.

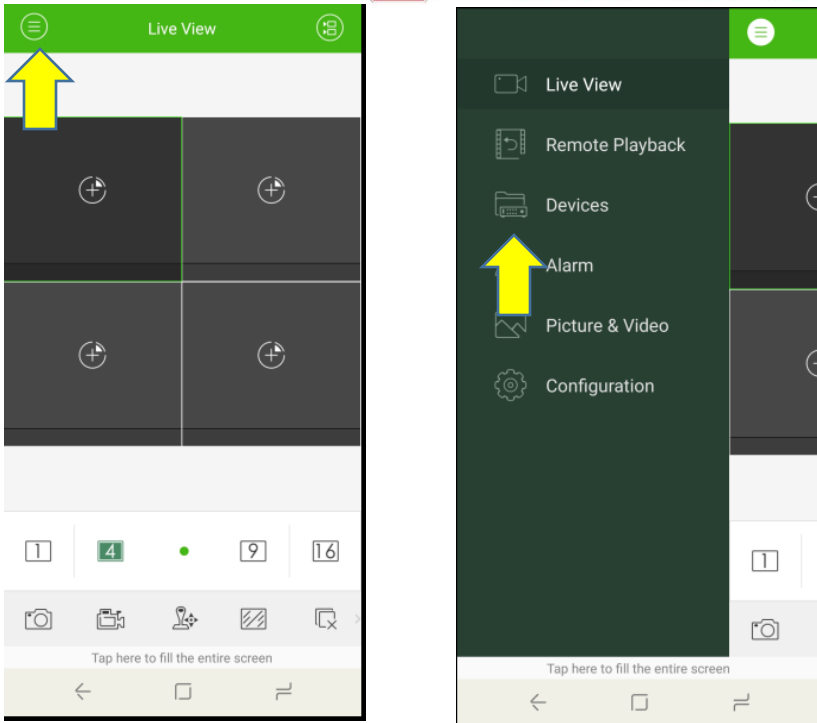
Go to "Configuration", "Network Settings", and "DDNS". This will show you the "Host Name" setup in the recorder



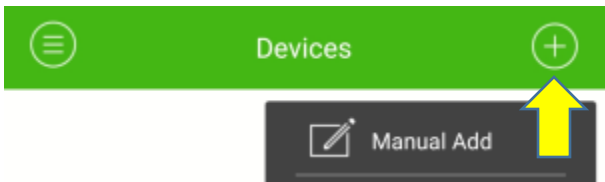
Next launch the application on your device.

Press the "sandwich" at the top left of the screen.

Then press the devices button.



Then press the + to add your recorder and select "Manual Add"



In the device setup enter the information for your recorder.

You have added your recorder to the application and it is ready for use.

