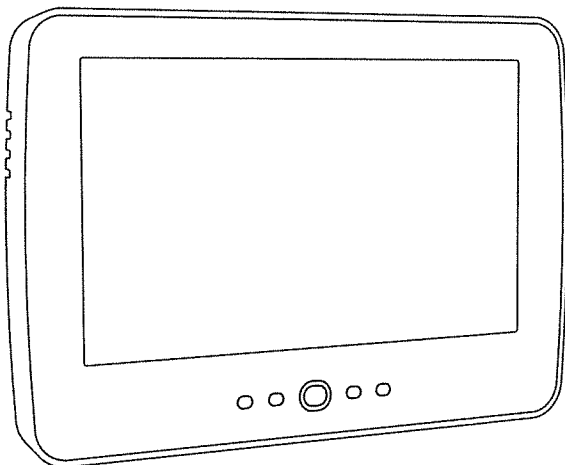


HS2TCHP v1.2 Touchscreen User Manual
Ecran tactile HS2TCHP v1.2 Manuel de l'utilisateur
Pantalla de Toque HS2TCHP v1.2 Manual del Usuario
Tela de Toque HS2TCHP v1.2 Manual do Usuario



WARNING: This manual contains information on limitations regarding product use, function and information on the limitation as to liability of the manufacturer. The entire manual should be carefully read.

MISE EN GARDE: Ce manuel contient des informations sur les limitations concernant l'utilisation et le fonctionnement du produit ainsi que des informations sur les limitations et les obligations du fabricant Lisez attentivement le guide complet.

AVISO: Este manual contiene información sobre limitaciones referentes a la utilización y al funcionamiento del producto e información sobre las limitaciones de las responsabilidades del fabricante. Todo el manual debe leerse atentamente.

ADVERTÊNCIA: Este manual contém informações sobre limitações em relação ao uso e funcionamento do produto, bem como informações sobre as limitações de responsabilidade do fabricante. Todo o manual deve ser lido com atenção.



DSC
From Tyco Security Products

Table of Contents

Table of Contents	2
Safety Notes	5
Important Safety Instructions	5
Regular Maintenance and Troubleshooting	5
Handling Precautions	5
Cleaning	5
Troubleshooting	5
Introduction	6
General System Operation	6
About Your Security System	6
Carbon Monoxide Detection (must be enabled by your Installer)	7
Fire Detection (must be enabled by your Installer)	7
Testing	7
Monitoring	7
Maintenance	7
Important Notice	7
Specifications and Features	8
Welcome Screen	8
Emergency Keys	9
Arming and Disarming the System	10
Stay Arm (Arming the Perimeter)	10
Silent Exit Delay	10
Disarm	11
Away Arm	11
Exit Delay Time Restart	11
Alarm Cancel Window	11
Bell/Siren Sounds After Away Arming	12
Audible Exit Fault	12
Arming Error	12
Remote Arming and Disarming	12
Using Your System	12
When Alarm Sounds	12
Intrusion (Burglary) Alarm Continuous Siren	12
If the Intrusion Alarm was Accidental	13
Fire Alarm Pulsed Siren	13
Wireless Carbon Monoxide Alarm	13
Troubles	14
Alarm Memory	14
Sensor Reset	15
Outputs	15

Additional Functions	16
Photos	16
Quick Exit	16
Time & Date Programming	16
Keypad Mode	16
Door Chime (Chime enable/disable)	16
Zone Status	16
Zone Status Indicators	17
Bypassed Zones	17
Bypassing Zones with a HS2TCHP	17
Options Menu	17
Access Codes	18
Assign Proximity Tags	18
Delete Proximity Tags	18
User Code Attributes	19
Inherent Attributes (all codes except installer and maintenance)	19
Programmable Attributes	19
Bell Squawk Attribute	19
Partition Assignment	19
Erasing an Access Code	19
Installer Menu	19
User Functions	20
Time and Date	20
Auto-Arm Time	20
Enable DLS/Allow System Service	20
Event Buffer	20
System Test	20
Auto-Arm/Disarm Control	21
User Call-up	21
Engineer's Reset	21
Keypad Configuration	21
Chime Enabled/Disabled	22
Arming	22
Partition Status	22
Keypad Mode	23
Managing Partitions	23
Partitions	23
Single Partition Operation	23
Loaning a Keypad to Another Partition	23
Global Keypad Operation	24
Fire and CO Zone Types	25

SMS Command and Control	26
Looking up the Number to Call for SMS Commands	26
Authorizing User Phones to Send SMS Commands	26
Sending SMS Commands to your System	26
SMS Commands	26
Testing Your System	28
Testing Your Keypad Sounder and Siren	28
Testing Your Entire System	28
Walk Test Mode	28
Allowing Computer Access To Your System	28
Reference Sheets	29
System InformationEnabled?	29
For Service	29
Central Station Information:	29
Installer Information:	29
Battery Installation / Service Date:	29
Access Codes (copy as needed)	30
Sensor / Zone Information (copy as needed)	31
Guidelines for Locating Smoke Detectors and CO Detectors	32
Smoke Detectors	32
Carbon Monoxide Detectors	33
Household Fire Safety Audit	34
Fire Escape Planning	34
License Agreement	35

Safety Notes

This manual shall be used in conjunction with the applicable Neo 1.2 User Manual, for the compatible alarm control panel models: HS2016, HS2032, HS2064 (E), HS2128 (E). Refer to part #: 29009534 (International) or to part #: 29009530 (North American).

Always ensure you obtain the latest version of the User Guide. Updated versions of this User Guide are available by contacting your distributor.

Warning: Read and save these instructions! Follow all warnings and instructions specified within this document and/or on the equipment.

Important Safety Instructions

To reduce the risk of fire, electric shock and/or injury, observe the following:

- Do not spill any type of liquid on the equipment.
- Do not attempt to service this product yourself. Opening or removing the cover may expose you to dangerous voltage or other risk. Refer servicing to qualified service personnel. Never open the device yourself.
- Do not touch the equipment and its connected cables during an electrical storm; there may be a risk of electric shock.
- Do not use the Alarm System to report a gas leak if the system is near a leak.

Regular Maintenance and Troubleshooting

Keep your HS2TCHP Touchscreen keypad in optimal condition by following all the instructions that are included within this manual and/or marked on the product.

Handling Precautions

Do not apply excessive force to the display surface or the adjoining areas since this may cause the color tone to vary.

Cleaning

- If the display surface is contaminated, breathe on the surface and gently wipe it with a soft, dry cloth. If still not completely clean, moisten cloth with isopropyl alcohol.
- Do not use abrasives, water, thinners, solvents or aerosol cleaners (spray polish), any aromatic solvents, ketones etc. that may enter through holes in the HS2TCHP Touchscreen keypad and cause damage.

Troubleshooting

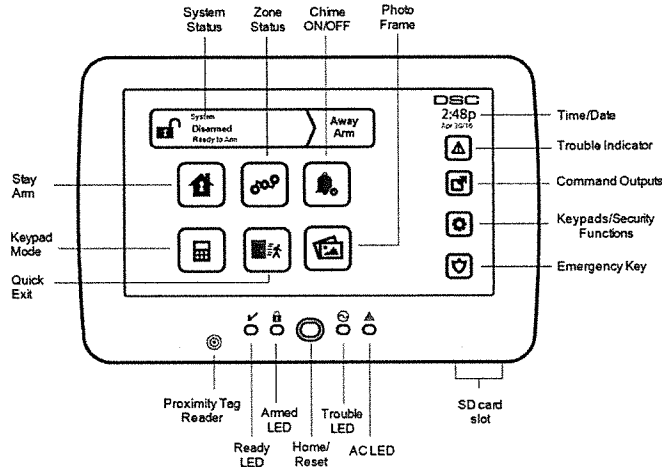
Occasionally, you may have a problem with your system. If this happens, your Alarm Controller will display an error message. Refer to the provided list when you see an error message on the display. If additional help is required, contact your distributor for service.

Warning: This equipment, HS2TCHP Touchscreen keypad shall be installed and used within an environment that provides the pollution degree max 2 and over-voltages category II non-hazardous locations, indoor only. It is designed to be installed, serviced and/or repaired by service persons only [service person is defined as a person having the appropriate technical training and experience necessary to be aware of hazards to which that person may be exposed in performing a task and of measures to minimize the risks to that person or other persons]. There are no parts replaceable by the end-user within this equipment.

Warning: Never obstruct the access to the Alarm controller to which this equipment is connected. These safety instructions should not prevent you from contacting the distributor and/or the manufacturer to obtain any further clarification and/or answers to your concerns.

Introduction

Figure 1- Controls and Indicators



The HS2TCHP Touchscreen is an interactive touch-sensitive color LCD that can be used on any PowerSeries Neo control panel. Due to the custom requirements of individual installations, some of the features described here may perform differently than described. Refer to your Installer's Instructions for the details of your specific installation and to the User Manual for general security system information.

General System Operation

Your security system is made up of a DSC control panel, one or more keypads and various sensors and detectors. The control panel will be mounted out of the way in a utility closet or in a basement. The metal cabinet contains the system electronics, fuses and standby battery.

Note: Only the installer or service professional shall have access to the control panel.

All the keypads have an audible indicator and command entry keys. The keypad is used to send commands to the system and to display the current system status. The keypad(s) will be mounted in a convenient location inside the protected premises close to the entry/exit door(s).

The security system has several zones of protection, each connected to one or more sensors (motion detectors, glassbreak detectors, door contacts, etc.). "Alarm Memory" on page 14 for information on sensors in alarm for this Touchscreen keypad.

About Your Security System

Your DSC Security System has been designed to provide you with the greatest possible flexibility and convenience. Read this manual carefully and have your installer instruct you on your system's operation and on which features have been implemented in your system. All users of this system should be equally instructed in its use. Fill out the "System Information" page with all of your zone information and access codes and store this manual in a safe place for future reference.

Note: The PowerSeries security system includes specific false alarm reduction features and is classified in accordance with ANSI/SIA CP-01-2010 Control Panel Standard - Features for False Alarm Reduction. Please consult your installer for further information regarding the false alarm reduction features built into your system as all are not covered in this manual.

Carbon Monoxide Detection (must be enabled by your Installer)

This equipment is capable of monitoring carbon monoxide detectors and providing a warning if carbon monoxide is detected. Please read the Family Escape Planning guidelines in this manual and instructions that are available with the carbon monoxide detector.

Fire Detection (must be enabled by your Installer)

This equipment is capable of monitoring fire detection devices such as smoke detectors and providing a warning if a fire condition is detected. Good fire detection depends on having adequate number of detectors placed in appropriate locations. This equipment should be installed in accordance with NFPA 72 (N.F.P.A., Batterymarch Park, Quincy MA 02269). Carefully review the Family Escape Planning guidelines in this manual.

Testing

To ensure that your system continues to function as intended, you must test it weekly. Please refer to the "Testing your System" section in this manual. If your system does not function properly, call your installing company for service.

Monitoring

This system is capable of transmitting alarms, troubles and emergency information to a central station. If you initiate an alarm by mistake, immediately call the central station to prevent an unnecessary response.

Note: The monitoring function must be enabled by the installer before it becomes functional.

Note: There is a communicator delay of 30 seconds in this control panel. It can be removed, or it can be increased up to 45 seconds, at the option of the end-user by consulting with the installer.

Note: For CP-01 systems, the monitoring function must be enabled by the installer before it becomes functional.

Maintenance

With normal use, the system requires minimum maintenance. Note the following points:

- Use the system test described in "Testing Your System" to check the battery condition. We recommend, however that the standby batteries be replaced every 3 - 5 years.
- For other system devices such as smoke detectors, passive infrared, ultrasonic or microwave motion detectors, or glassbreak detectors, consult the manufacturer's literature for testing and maintenance instructions.

Important Notice

A security system cannot prevent emergencies. It is only intended to alert you and, if included, your central station of an emergency situation. Security systems are very reliable but they may not work under all conditions, and they are not a substitute for prudent security practices or life and property insurance. Your security system should be installed and serviced by qualified security professionals who should instruct you on the level of protection that has been provided and on system operations.

Specifications and Features

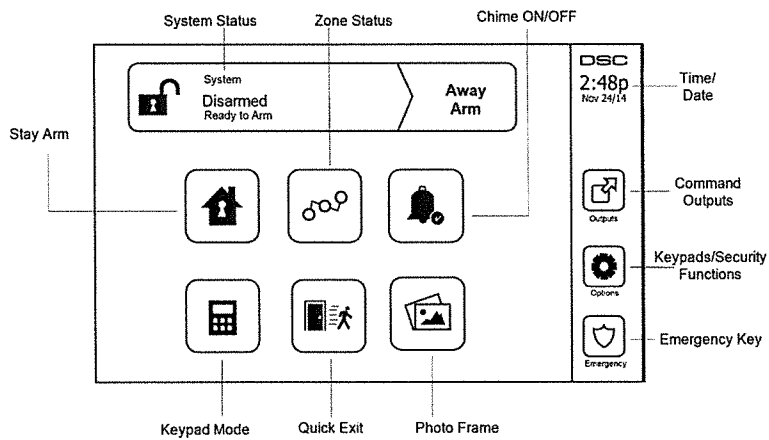
Display	7" TFT (800 x 480 pixel) Color Touchscreen
Home button	Home/Calibration/Reset
LED indicators	4 (Ready, Armed, Trouble, AC)
Dimensions (mounting)	8.5" x 5.1" x 0.8" [127.9 mm (L) x 195 mm (W) x 20.35 mm (D)]
Horizontal viewing angle	70°
Vertical viewing angle	70° (top), 50° (bottom)
Brightness	280 cd/m ²
Operating environment	0°C to +49°C (32°F to 120°F) 93% (max) relative humidity non-condensing
SD card slot	Holds any standard Secure Digital (SD) card* (32 x 24 x 2.1 mm)

*If necessary, the SD card can be formatted to file system FAT16 or 32 using a PC. The maximum size SD card supported is 32GB.

Welcome Screen

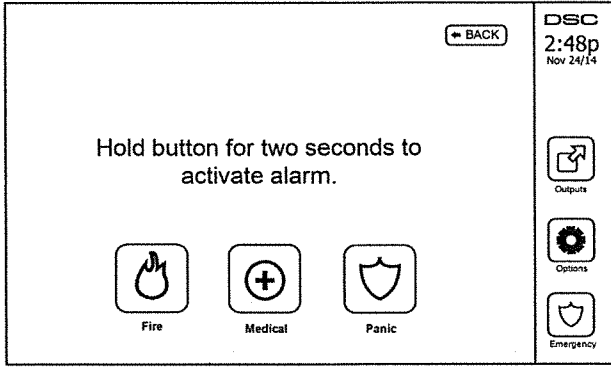
The date and time are displayed in the upper right corner of the screen. The system status (i.e., Ready, Armed, Exit Delay etc.) is displayed at the top of the screen.

Figure 2- Welcome Screen



Emergency Keys

Figure 3- Emergency Screen



When the emergency key is pressed, a new screen is displayed with:

Fire	Fire Assistance Required. Press and hold for 2 seconds to activate.
Medical	Medical Assistance Required. Press and hold for 2 seconds to activate.
Panic	Police Assistance Required. Press and hold for 2 seconds to activate.

Important: The Medical and Panic keys are ON by default. The Fire key will not function unless programmed by the Installer. Please ask your installer if the Fire, Medical and Panic keys are enabled.

Note: These events are recorded in the log.

Arming and Disarming the System

Stay Arm (Arming the Perimeter)

Ask your alarm company if this function is available on your system.

Stay arming bypasses the interior protection (i.e., motion sensors) and arms the perimeter of the system (i.e., doors and windows). Close all sensors (i.e., stop motion and close doors). The Ready (✓) indicator should be on. Press the Stay Arm button and/or enter your Access Code and do not leave the premises (if your installer has programmed this button). During exit delay, the Armed (🔒) and Ready(✓) indicators turn on to visually indicate that the system is arming.

When the exit delay expires, the Ready LED turns off, the Armed LED remains on and the keypad stops sounding to indicate that the alarm system is armed.

Note: For SIA FAR listed panels, the Stay Arming exit delay will be twice as long as the Away Arming exit delay.

Silent Exit Delay

If the system is armed using the Stay Arm button or using the "No Entry" Arming method ([*][9][access code]), the audible progress annunciation (keypad buzzer) is silenced and the exit time doubled for that exit period only (CP-01 versions only).

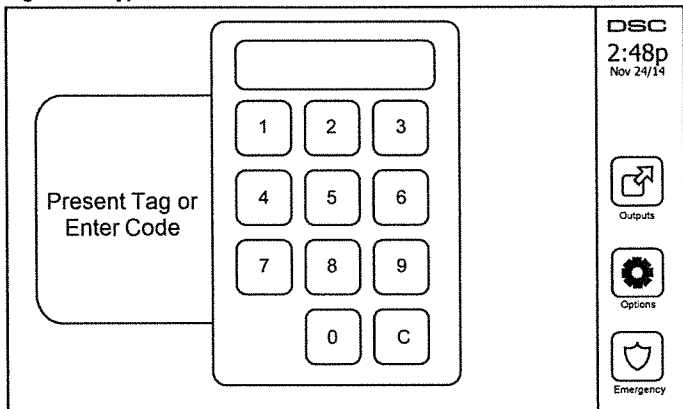
Note: For non CP-01 versions, Standard exit time is used.

When Stay Arm is selected from the Home screen:

- The display indicates "Exit Delay in Progress," and the pre-programmed exit delay begins.
- The Armed LED Indicator turns on.

If Quick Arm is not enabled by the installer, then a numerical keypad is displayed (see following figure). Enter a valid access code to proceed.

Figure 4- Keypad



If Disarm is selected during the exit delay, a numeric keypad is displayed.

- Enter (tap) your access code.
- The arming sequence is aborted and the system returns to the Home screen.
- The Armed LED turns OFF.

At the end of the pre-programmed exit delay:

- The Disarm screen is displayed.
- The Ready Indicator turns OFF.
- "Stay Armed-Bypass" is displayed in the Status Bar.

Note: This screen will go into stand-by mode after 15 minutes. Tap the screen to restore the display.

Disarm

If Disarm is selected:

- A numerical keypad is displayed.
- Enter your Access Code in the keypad.
- The system returns to the Home screen and the red Armed indicator turns OFF.
- The alarm status is momentarily displayed in the status bar, then "Ready" is displayed.
- The green Ready indicator turns ON.

Note: If your code is invalid, the system will not disarm and a 2-second error tone will sound. If this happens, press # and try again.

Away Arm

When Away Arm is selected:

- Enter a valid access code to proceed.
- The Armed LED Indicator turns ON.
- "Exit Delay in Progress" is displayed in the Status Bar. The pre-programmed exit delay begins.
- The touchscreen "beeps" at a 1-second urgency interval during the exit delay. Then 3 beeps sound in the last 10 seconds.

Note: If Quick Arm is not enabled by the installer, a numerical keypad is displayed.

If Disarm is selected during the exit delay:

- A numeric keypad is displayed. Tap your access code.
- The Arming sequence is aborted and the system returns to the Home screen.
- The Armed LED turns OFF.

At the end of the pre-programmed exit delay:

- The Disarm screen is displayed.
- The Ready Indicator turns OFF.
- "Away Armed" is displayed in the Status Bar.

Exit Delay Time Restart

The control panel provides an option where if an entry/exit zone is tripped, a second time prior to the end of the exit delay, the exit delay time restarts. The exit delay timer can only be restarted once.

Alarm Cancel Window

The control panel provides a period of time in which the user can cancel the alarm transmission. The minimum duration of this time is five minutes. If the programmed alarm transmission delay has expired, canceling an alarm sends a message to the monitoring station. Upon a successful transmission of the cancelation message, the keypad will beep 6 times.

Bell/Siren Sounds After Away Arming

Audible Exit Fault

In an attempt to reduce false alarms, the Audible Exit Fault is designed to notify you of an improper exit when arming the system in the Away mode. In the event that you fail to exit the premises during the allotted exit delay period, or if you do not securely close the Exit/Entry door, the system will notify you that it was improperly armed in two ways: the keypad will emit one continuous beep and the bell or siren will sound.

Your installer will tell you if this feature has been enabled on your system. If this occurs:

1. Re-enter the premises.
2. Enter your access code to disarm the system. You must do this before the entry delay timer expires.
3. Follow the Away arming procedure again, making sure to close the entry/exit door properly.

Arming Error

An error tone will sound if the system is unable to arm. This will happen if the system is not ready to arm (i.e., sensors are open), or if an incorrect user code has been entered. If this happens, ensure all sensors are secure. Press [#] and try again, ensuring that a valid access code is entered. Please check with your installer to determine if arming is inhibited by any other means.

Remote Arming and Disarming

The system can be armed and/or disarmed using the remote wireless key or proximity tag. When arming the system by using the Arm button on the wireless key, the system will acknowledge the command by sounding a single bell squawk (if bell squawk is enabled). When disarming using the Disarm button on the wireless key, the system will acknowledge the command by sounding two bell squawks (if bell squawk is enabled) that can be heard from the exterior of the premises.

To arm the system with a proximity tag:

- Present your proximity tag to a keypad equipped with a proximity sensor anytime the system Ready indicator is on.
- If configured by your installer, enter your access code.

To disarm the system with a proximity tag:

- Present your proximity tag to a keypad equipped with a proximity sensor anytime the system is armed. (Armed indicator is on) and if configured as required, enter your access code.
- If you walk through the entry door the keypad will beep. Present your Proximity tag within ____ seconds to avoid an alarm condition.

Using Your System

This section provides additional information about how to use your alarm system.

When Alarm Sounds

The system can generate 3 different alarm sounds:

- Temporal/pulsed siren = Fire Alarm
- 4 beeps, 5-second pause, 4 beeps = Carbon Monoxide Alarm
- Continuous siren = Intrusion (Burglary Alarm)

Note: The priority of signals is fire alarm, carbon monoxide alarm and medical alarm, then burglary alarm.

Note: Medical alarm is silent. It only results in an alarm transmission to the monitoring station.

Intrusion (Burglary) Alarm Continuous Siren



If you are unsure of the source of the alarm, approach with caution! If the alarm was accidental, enter your Access Code to silence the alarm. Call your central station to avoid a dispatch.

If the Intrusion Alarm was Accidental

1. Enter your Access Code to silence the alarm. If the code is entered within 30s (or the programmed value of the alarm transmission delay) the transmission of the alarm to the monitoring station will be canceled.
2. Call your central station to avoid a dispatch.

Fire Alarm Pulsed Siren



Follow your emergency evacuation plan immediately!

If the fire alarm was accidental (e.g., burned toast, bathroom steam, etc.), enter your Access Code to silence the alarm. Call your central station to avoid a dispatch. Ask your alarm company if your system has been equipped with fire detection. To reset the detectors, see the Sensor Reset section.

Wireless Carbon Monoxide Alarm

Activation of your CO alarm indicates the presence of carbon monoxide (CO), which can be fatal. During an alarm, the red LED on the CO detector flashes rapidly and the buzzer sounds with a repeating cadence of: 4 quick beeps, 5-second pause, 4 quick beeps. Also, during an alarm, the siren connected to the control panel produces a repeating cadence of 4 quick beeps, 5-second pause, 4 quick beeps. The keypad will also provide audible and visual indication of the CO alarm.

If an Alarm Sounds:

1. Operate silence button.
2. Call emergency services or your fire department.
3. Immediately move outdoors or to an open door/window.

Warning: Carefully review your Carbon Monoxide Installation/User Guide to determine the necessary actions required to ensure your safety and ensure that the equipment is operating correctly. Incorporate the steps outlined in the guide into your evacuation plan.

Troubles

When a trouble condition is detected, the Trouble (⚠) or System indicator will turn on, and the keypad will beep every 10 seconds. Press the (⚠) key to silence the beeps. Press (⚠) to view the trouble condition. The Trouble (⚠) or System indicator will flash. The corresponding trouble will light up.

Troubles	Comments	Action
Service Required (Press for more details)	Low Battery	General System Supervision
	Bell Circuit	RF Jam Detected
	General System Trouble	Panel Low Battery
	General System Tamper	Panel AC Loss
AC Loss	If the building and/or neighborhood has lost electrical power, the system will continue to operate on battery for several hours.	Call for service
Phone Trouble	The system has detected that the telephone line is disconnected.	Call for service
Communication Failure	The system attempted to communicate with the monitoring station, but failed. This may be due to Telephone Line Fault.	Call for service
Zone Fault	The system is experiencing difficulties with one or more sensors on the system. Press to display the zone.	Call for service
Zone Tamper	The system has detected a tamper condition with one or more sensors on the system. Press to display the zone.	Call for service
Wireless Low Battery	The system has detected a low battery condition with one or more modules/sensors on the system. Press to display the zone, keypad, wireless key(s) and RF Delinquency low battery conditions. Press again to see zone troubles.	Call for service
Loss of Clock	If complete power was lost (AC and Battery), the time and date will need to be reprogrammed.	Reprogram Time & Date

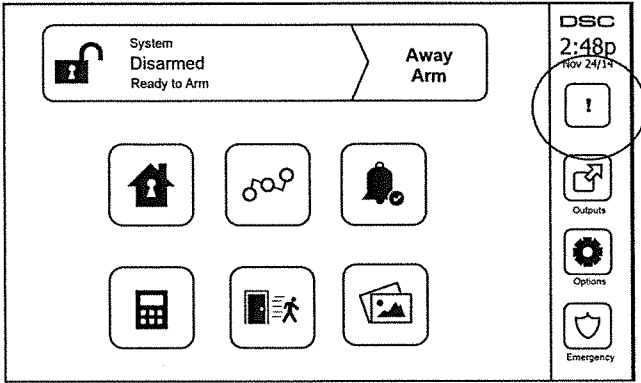
Alarm Memory

When an alarm occurs, the Alarm indicator flashes. (⚠)

To view which sensor(s) generated the alarm, press Alarms.

The sensor number where the alarm occurred will be displayed (e.g., zone 3). Use the [<|>] scroll keys to view the sensors in alarm memory. Press Back or Home to exit. To clear the memory, arm and disarm the system. If an alarm sounded while armed, the keypad will automatically go to alarm memory when you disarm the system. In this instance, you should approach with caution, as the intruder may still be within the building/premises.

Figure 5- Alarms in Memory



Sensor Reset

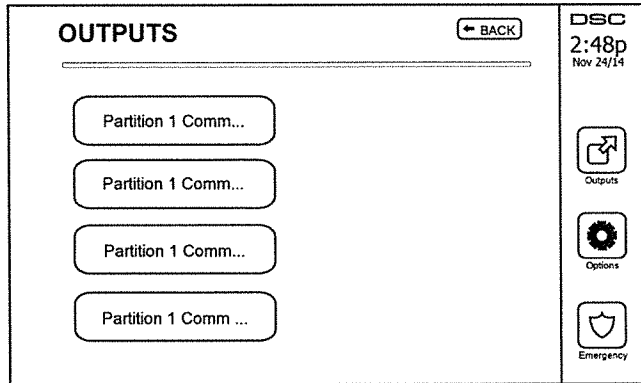
Certain sensors, after having detected an alarm condition, require a reset to exit the alarm condition (e.g., glass break sensors, smoke detectors, etc.). Ask your alarm company if this function is required on your system.

To reset the detectors, press the Reset (Command Output 2 if the installer did not program a label) button on the Outputs screen. If a sensor fails to reset, it may still be detecting an alarm condition. If the sensor reset is successful, the alarm is canceled. If unsuccessful, the alarm will reactivate or continue.

Outputs

Your installer may have programmed these keys to perform various functions (reset smoke detector after an alarm, open your garage door, etc.) To activate these functions, press Output and then press the appropriate option. For additional information, refer to the section: Sensor reset.

Figure 6- Outputs



Additional Functions

Photos

You can create a slideshow of photos to View on the keypad. Photos are added using an SD card (32x24x2.1 mm. Not supplied).

The photos must be .jpg format and can be up to 1280 x 720 in size. For best results, use 800 x 480 resolution. Use photo editing software to adjust the size of your photos.

To start the slideshow, press the Photos button on the Home page. The slideshow plays automatically until the timeout is reached or the screen is touched again.

To add photos:

1. Press Options, User Functions, Keypad Config, Picture Frame, Select Photos. Thumbnail images of the photos on your SD card are displayed.
2. Touch an image to add it to the slideshow. Touch it a second time to remove it.

Use the Transition Time slider to program the amount of time each photo is on screen, from 5 seconds to 1 minute.

Use the Photo Frame Timeout slider to control how long your slideshow plays for, from 1 minute to 2 hours. Select Never to keep the slideshow running until the screen is touched.

Quick Exit

If the system is armed and you need to exit, use the quick exit function to avoid disarming and rearming the system. To activate this function, tap the Quick Exit icon. You have 2 minutes to leave the premises through your exit door. When the door is closed again the remaining exit time is canceled.

Time & Date Programming

Tap on Options. Select User Functions [Master Code] and then select Time & Date. Tap on the section you would like to change and use the up/down arrows to change time/date. Once done, press Save.

Keypad Mode

This option allows the HS2TCHP Touchscreen to function as a traditional DSC keypad.

Door Chime (Chime enable/disable)

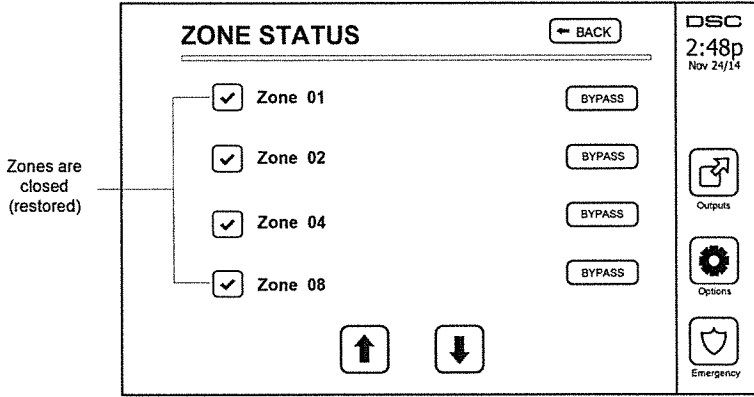
The keypad indicates the current state of the door chime function (Enabled or Disabled). To choose the opposite function, tap the 'Chime' icon. Three beeps indicate that the chime is ON (Enabled). One long beep indicates that chime is OFF (Disabled).

Note: The door chime feature should be used in Disarmed mode only.

Zone Status

This screen allows you to view the status of the zones on the system.

Figure 7- Zone Closed



Zone Status Indicators

<input checked="" type="checkbox"/>	Ready	Zone is closed
<input type="checkbox"/>	Open	The zone is open and needs to be closed

Bypassed Zones

Use the zone bypass feature when a zone is open but the system needs to be armed. Bypassed zones will not cause an alarm when opened. Bypassing zones reduces the level of security. If you are bypassing a zone because it is not functioning, call a service technician immediately so that the problem can be resolved and your system returned to proper working order.

Ensure that no zones are unintentionally bypassed when arming your system. Zone bypassing can only be performed while the system is disarmed. Bypassed zones are automatically canceled each time the system is disarmed and must be bypassed again, if required, before the next arming.

Note: 24-hour zones can only be bypassed manually.

Note: For security reasons, your installer has programmed the system to prevent certain zones from being bypassed. (e.g., smoke detectors).

Bypassing Zones with a HS2TCHP

When in the Zone Status page, scroll up/down through the desired zones, and tap on the bypass icon to bypass the zone. To unbypass a zone, tap the unbypass icon.

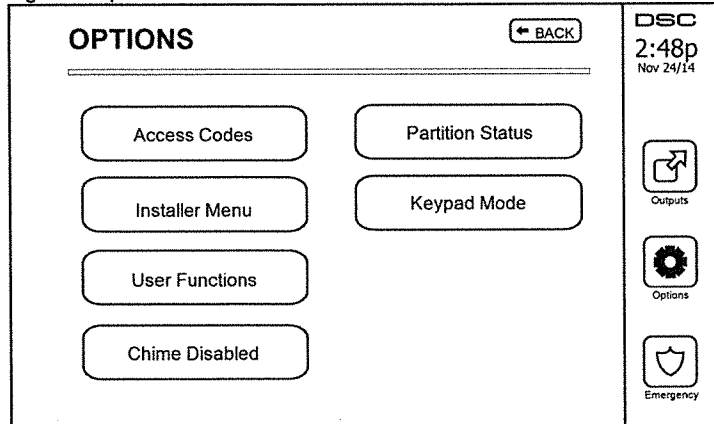
Note: For UL listed installations, zones can only be bypassed manually.

Options Menu

Access the following functions by pressing Options on the right side of the home page. See the online HS2TCHP User Manual for more information.

- Access Codes
- Installer Menu
- User Functions
- Chime Enabled/Disabled
- Partition Status
- Keypad Mode

Figure 8- Options



Access Codes

When Access Codes is selected from the Options menu, the keypad prompts for a Master Code. When a valid Master Code is entered, a numeric keypad is displayed with arrows to scroll through the list of users. Press the Select button to enter the user options.

Set Access Code: adds/edits the 4-digit code

Set Partitions: assigns the user to partitions

User Options: enables/disables different options for the user

Delete User: deletes the user from the system

The access codes have programmable attributes which allow zone bypassing, or one-time use activation.

Master Code (Access Code 01): The master code, if programmed, can only be changed by the installer.

Supervisor Codes: These codes can be used to program additional codes which have equal or lesser attributes. Once programmed, the supervisor codes receive the master code's attributes. These attributes are changeable. Any user code can be made a supervisor code by enabling User Code Attribute 1 (see the following for details).

Duress Codes: Duress codes are standard user codes that transmit the Duress Reporting Code when entered to perform any function on the system. Any user code can be made a duress code by enabling User Code Attribute 2 (see the following for details).

Note: Duress codes are not valid when entering User Programming, Master Functions or Installer's sections.

Note: Access codes cannot be programmed as a duplicate or as a "Code +/- 1".

Assign Proximity Tags

Depending on how your keypad is programmed, proximity tags can be used to either arm/disarm the system or to perform a programmed function (e.g. unlock a cabinet or storeroom door). Present the tag to the tag reader.

1. Press [*][5]Master/Supervisor Code].
2. Enter a 4-digit user code.
3. Press 2.
4. Pass the enrolled tag near the tag reader.

Delete Proximity Tags

To delete a proximity tag:

1. Select Options, Access Codes [enter Master code].
2. Select a user to delete.

3. Select Prox Tag Prog then delete.

User Code Attributes

1. The default attributes of a new code will be the attributes of the code used to enter User Programming whether it is a new code or an existing code being programmed.
2. System Master Code 01 has partition access for all partitions, as well as attributes 3-4 ON by default.

Note: These attributes are not changeable.

Inherent Attributes (all codes except installer and maintenance)

Arm/Disarm: Any access code with partition access enabled will be valid for arming and disarming that partition.

Command Outputs ([*][7][1], [*][7][2], [*][7][3], and [*][7][4]): If these outputs require access code entry, any Access Code with partition access will be valid for performing the command output functions on that partition.

Programmable Attributes

- | | |
|---------------------------|--------------------------------------|
| 1. Supervisor Code | 5. For Future Use |
| 2. Duress Code | 6. For Future Use |
| 3. Zone Bypassing Enabled | 7. Bell Squawk upon Arming/Disarming |
| 4. Remote Access | 8. One Time Use Code |

Bell Squawk Attribute

This attribute is used to determine whether an access code should generate an arming/disarming Bell Squawk upon entry of the code for Away arming. The wireless keys with access codes associated with them may generate Arming/Disarming Bell squawks. If desired, this option may be used with codes that are manually entered. Please contact your installer to have this programmed.

Note: The Master Code cannot use the Bell Squawk attribute, but is required to enable it for other codes.

Note: This feature cannot prevent the Arming/Disarming squawks from being generated if an access code assigned to a wireless key is manually entered at a keypad.

Note: This feature is used to announce fire trouble signals and also trouble conditions for medical applications.

Partition Assignment

1. This section is used to assign users to available partitions. To assign partitions:
2. Select Options > Access Codes.
3. Enter the master code.
4. Select a user.
5. Select Partition Attributes.
6. Select the partition(s) to assign to the user.

Notes on Access Codes and Programming

- The master code's attributes cannot be changed.
- When a new code is programmed in User Programming it will be checked against all other codes in the system. If a duplicate code is found, an error tone is given and the code is returned to what it was before it was changed. This applies to both 4 and 6-digit codes.

Erasing an Access Code

To erase a code, select the code and choose Delete User. The system will delete the code immediately and the user will be returned to select another code.

Installer Menu

These functions are for the installer's use only.

User Functions

First disarm the system then enter Options, User Functions, then Master Code. This command is used to gain access to the following list of master functions of the system:

Time and Date

Enter desired time and date.

Auto-Arm Time

The system can be programmed to arm at a programmed time each day, per partition. Upon entry of this section, enter the desired Auto-Arm time for each day of the week.

At the selected Auto-Arm time, the keypad buzzers will sound for a programmed amount of time (programmable by the installer only) to warn that an auto-arm is in progress. The bell can also be programmed to squawk once every 10 seconds during this warning period. When the warning period is complete, the system will arm with no exit delay and in Away mode.

Auto-Arming can be canceled or postponed by entering a valid access code only during the programmed warning period. Auto-Arming will be attempted at the same time the next day. When the Auto-Arming process is canceled or postponed, the Auto-arm Cancellation Reporting Code will be transmitted (if programmed).

If arming is inhibited by one of the following, the Auto-Arm Cancellation transmission will be communicated:

- AC / DC Inhibit Arm
- Latching System Tamper
- Zone Expander Supervisory Fault

Note: For UL/ULC listed installations, the auto-arm feature shall be canceled when there are zones in an off-normal condition.

Enable DLS/Allow System Service

If enabled, the installer will be able to access Installer Programming via remote (DLS). The DLS window will remain open for 6 hrs, during which time the installer will be able to enter DLS an unlimited number of times. After the 6-hr window has expired, Installer's Programming will be unavailable again until the window is re-opened.

Event Buffer

- Displays the date, time and the full description of the event
- The Log is organized from the most recent event (Top) to past events (Down)
- The Left arrow scrolls forward in time
- The Right arrow scrolls back in time
- The Back returns you to the Home screen
- This screen will time out to the Home screen after 30 seconds of inactivity

System Test

The system's bell output, keypad lights and communicator are tested. This test will also measure the panel's standby battery.

Important:

- To ensure that your system continues to function as intended, you must test your system weekly.
- For UL HOME HEALTH CARE listed applications, the system shall also be tested weekly without AC power. To remove AC from the control unit, remove the screw from the restraining tab of the plug in adapter and remove the adapter from the AC outlet. After completing the test of the unit using only the battery backup source, reconnect the plug in adapter and attach the screw through the restraining tab, so that the adapter is securely attached to the outlet.
- Should your system fail to function properly, contact your installation company immediately.

- All smoke detectors must be tested by your smoke detector installer once a year to ensure proper operation.

Auto-Arm/Disarm Control

Pressing Auto-Arm while in the User Function menu will enable (three beeps) or disable (one long beep) the Auto-Arm and Auto-Disarm feature, by partition. With this feature enabled, the panel will automatically arm in Away mode (Stay/Away zones active) or disarm at the same time each day. The Auto-Arm time is programmed with the Auto-Arm time button. Auto-Disarm must be programmed by the system installer.

User Call-up

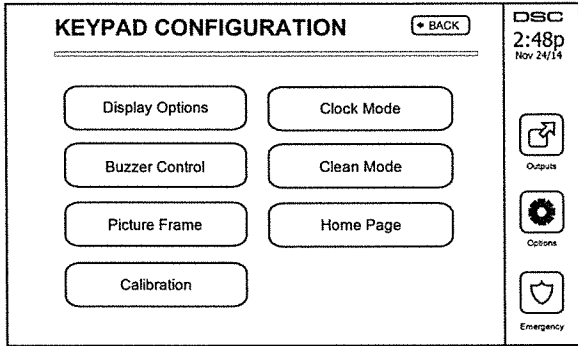
This option gives your service provider temporary access to the alarm control panel for remote servicing.

Engineer's Reset

If an alarm has occurred on your system, the system will not allow you to rearm (Ready light is OFF). You will need to contact your installer. They will check and reset the system for you. This may involve a visit to check your system. After the reset is performed, your system will function properly again.

Keypad Configuration

Figure 9- Keypad Configuration



Display Options: sets the brightness and screen timeout of the Touchscreen, as well as screen saver options.

Buzzer Control: sets the buzzer volume of the Touchscreen. Note: For SIA CP-01, the buzzer volume shall not be placed at the minimum setting.

Note: For UL/ULC installations, the buzzer level shall not be changed from the default level.

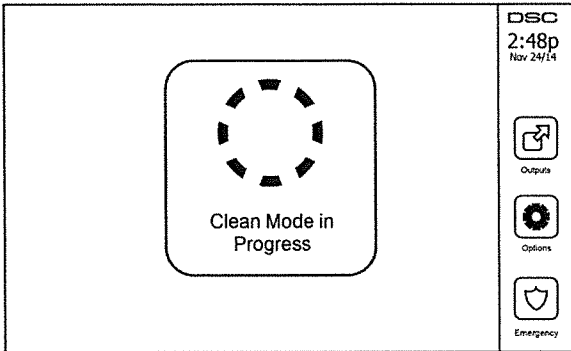
Picture Frame: selects the pictures that will be displayed on the slideshow.

Calibration: calibrates the Touchscreen.

Clock Mode: displays the digital clock.

Clean Mode: allows the user to touch (i.e., clean) the screen without enabling or disabling any functions. The screen will remain in this mode for 30 seconds, then return to the Keypad Configuration screen.

Figure 10- Clean Mode



Home Page: can be configured in one of two different views, Classic (square buttons) and Contemporary (rondel).

Chime Enabled/Disabled

Door Chime: To turn the door chime function On/Off, tap the Chime icon. 3 beeps indicate that the chime is ON. 1 long beep indicates the Chime is OFF.

Arming

Stay Arm: arms the system in Stay mode

Away Arm: arms the system in Away mode

Night Arm: To fully arm the system when it has been armed in Stay Mode, press Night Arm button. All interior zones will now be armed except for devices programmed as Night Zones. Night zones are only armed in Away mode. This permits limited movement within the premises when the system is fully armed. Ensure that your installer has provided you with a list identifying zones programmed as night 18 zones. When the interior zones have been activated (i.e., Night Arm), you must enter your access code to disarm the system to gain access to interior areas that have not been programmed as night zones.

Quick Exit: refer to the section: Quick Exit

Global Away Arm: arms all partitions to which the User Code is assigned, in Away mode.

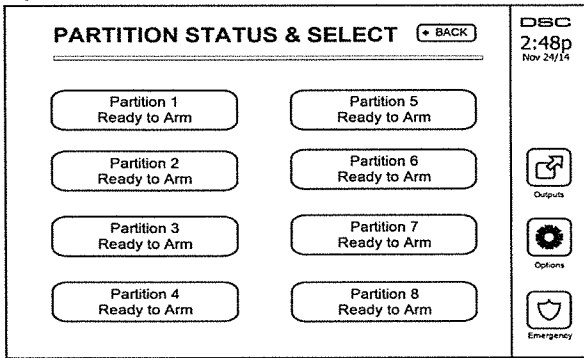
Global Stay Arm: arms all partitions to which the User Code is assigned, in Stay mode.

No Entry Arm: arms the system with no entry.

Partition Status

To view the partition status, press Options, User Functions, then Partition Status. The keypad shows basic status for up to 8 partitions, depending on the configuration of your system. Each partition is identified along with its current status.

Figure 11- Partition Status



Keypad Mode

This option allows the HS2TCHP Touchscreen to function as a traditional DSC keypad.

Managing Partitions

A partition is a limited area of the premises which operates independently from the other areas. Partitioning a system can be beneficial if the property has outbuildings that need to be secured independently of a main area or if the home has a separate apartment. Each partition can have its own keypad, or a keypad can have access to all partitions. User access to partitions is controlled via access code. A master code can access the entire system and partitions, while a user code is limited to assigned partitions.

Partitions

Keypads can be configured to control an individual partition or all partitions.

Note: Access to this feature must be configured by your installer.

Single Partition Operation

Single partition keypads provide access to alarm functionality for an assigned partition.

Single partition keypads behave as follows:

- Displays the armed set state of the partition.
- Displays open zones, if assigned to the partition the keypad is on.
- Displays bypassed zones and allows zone bypassing or creating bypass groups of zones assigned to the keypad partition.
- Displays system troubles (system low battery, system component faults/tampers).
- Displays alarms in memory that occurred on the partition.
- Allows the door chime to be Enabled/disabled.
- System test (sounds bells/PGMs assigned to the partition).
- Label programming (zone, partition and user labels for the partition).
- Command output controls (outputs assigned to the partition, or global outputs such as smoke detector reset).
- Temperatures.

Loaning a Keypad to Another Partition

The HS2TCHP Touchscreen Keypad can be loaned to operate on other partitions. When a keypad is loaned to another partition, it will behave on the loaned partition as if it was originally assigned there. An access code must be entered before loaning a keypad to another partition. An access code is also required to perform any function on that partition.

To loan a keypad to another partition:

1. Select Options > Partition Status.
2. Enter your access code.
3. Select the partition to loan the keypad to. If the keypad is inactive for more than 30 seconds, it will return to its original partition.

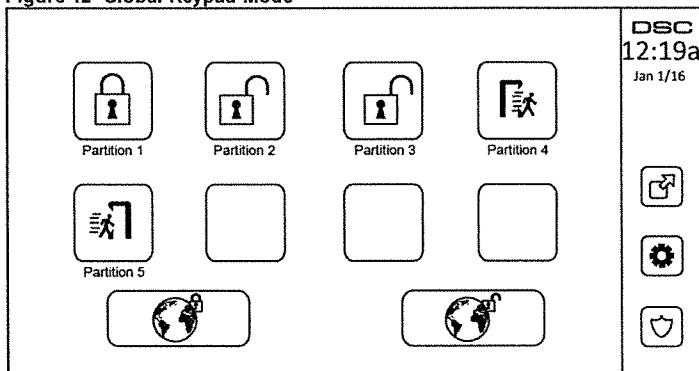
Global Keypad Operation

Once a valid access code is entered, a global keypad will display the status of any partitions that the user has permission to view. From this overview, you can loan the global keypad to a partition, arm all partitions or disarm all partitions. The status of each partition will be identified by a partition status icon. For an explanation of partition status icons, see the table below. The global arm and global disarm buttons will arm or disarm all displayed partitions.

To Loan a Global Keypad to Another Partition:

1. Select Partition Status.
2. Select the partition to loan the keypad to.

Figure 12- Global Keypad Mode



Partition Status Icon	Description
	GREEN BACKGROUND Partition is ready to be armed
	Partition is in exit delay
	GRAY BACKGROUND Partition is not ready to be armed
	Partition is in alarm
	Partition is in entry delay
	Partition is armed

Fire and CO Zone Types

- If a Fire zone generates an alarm only the partition the fire zone is assigned to will go into alarm. Other partitions retain their current state.
- If the [F] key on a global keypad is used to generate an alarm all enabled partitions will go into alarm.
- One or more fire keypads may be located on any partition.
- On alarm, the fire auto-scroll display appears on all partition keypads and on all global keypads. Fire alarm silence and fire system reset may be done directly on any partition keypad. To silence a fire or CO alarm from a global keypad requires that the global keypad be loaned to one of the partitions.

SMS Command and Control

SMS Command and Control allows you to send text messages to your system, enabling the system to perform certain actions. For a list of commands and how to send them see the SMS Commands table. As a security measure, only authorized phone numbers can interact with your system. Messages from all other phone numbers will be rejected.

Note: This is a supplementary feature that has not been investigated by UL/ULC. Must be enabled and configured by your installer.

Looking up the Number to Call for SMS Commands

The phone number of the system is set at the time of installation. To quickly find the phone number perform the following steps.

1. Select User Functions > SMS Programming
2. Using the downward pointing arrow, scroll to Phone #9
3. The number programmed in Phone #9 is the phone number of the system. Send SMS commands to this number to interact with your system.

Authorizing User Phones to Send SMS Commands

You can authorize up to eight phone numbers to interact with your system with SMS. Before the system will accept an incoming SMS command, you must enter the sending phone number.

To authorize a phone for SMS Commands:

1. Select User Functions > SMS Programming
2. Using the up and down pointing arrows, scroll to an empty phone number and select it
3. Using the numerical pad, enter the phone number of the phone you want to authorize and press Save.

Sending SMS Commands to your System

In order to successfully send commands to your system from your cellphone, you must send SMS messages in the proper format. If configured, commands require the inclusion of a User Access Code in your message. The access code will be verified by the system before executing any commands.

Additional information about sending SMS commands:

- Text messages are not case sensitive and extra spaces are ignored.
- In multi-partition systems and if the User has rights to manage the desired partitions, commands can be sent to specific partitions by including the partition number. For more information on partitions see: "Managing Partitions".
- If the panel is configured to require an Access Code and the code is not sent or is invalid, the panel will send a notification to the user advising the command was unsuccessful.

The following table lists all available SMS commands with examples of how to enter the Partition number and access codes. The format for entering commands is as follows:

Note: Verify with your installer that the Partition number and access code are required in your SMS message. If one or both are not required, do not enter them in your SMS message.

Note: Responses to Status and Alarm Memory requests may require more than 1 SMS message, depending on status of the system. There is a 10 second delay between transmission of SMS messages.

SMS Commands

Commands	Notes
Stay ArmSet	Stay armssets the system
Away ArmSet	Away armssets the system
Night ArmSet	Night armssets the system
DisarmUnset	DisarmsUnsets the system
Activate Command Output 1	Activates Output 1
Activate Command Output 2	Activates Output 2
Activate Command Output 3	Activates Output 3
Activate Command Output 4	Activates Output 4
Deactivate Command Output 1	Deactivates Output 1
Deactivate Command Output 2	Deactivates Output 2
Deactivate Command Output 3	Deactivates Output 3
Deactivate Command Output 4	Deactivates Output 4
Bypass 001	Bypasses specified zone number
Unbypass 001	Clears the bypass from the specified zone number
Status Request	Omitting the partition number causes the system to send a status report for all partitions. To request a status report for a specific partition enter the appropriate partition number.
Alarm Memory Request	Omitting the partition number causes the system to send a status report for all partitions. To request a status report for a specific partition enter the appropriate partition number.
Help	The Help command generates an SMS response listing all Interactive commands that can be sent to the module. Access Code is not required.

Testing Your System

Note: If you are going to perform a System Test, call your Monitoring Station to inform them when you begin and also when you end the test.

Testing Your Keypad Sounder and Siren

The System Test performs a two-second check of the keypad sounder and bell or siren, in addition to testing the keypad status lights and the panel backup battery.

1. Press Options, User Functions [Master Code], then System Test. The following will occur:
 - The system activates all keypad sounders and bells or sirens for 2 seconds. All keypad lights turn ON.
 - The Ready, Armed, and Trouble LEDs will flash for the duration of the test.
2. To exit the function menu, press [#].

Testing Your Entire System

All smoke detectors in this installation must be tested by your smoke detector installer or dealer once a year to ensure they are functioning correctly. It is the user's responsibility to test the system weekly (excluding smoke detectors). Ensure you follow all the steps in the "Testing Your Keypad Sounder and Siren" section.

Note: Should the system fail to function properly, call your installation company for service immediately.

1. Prior to testing, ensure that the system is disarmed and the Ready light is on.
2. Close all zones to return the system to the Ready state.
3. Perform a System Test by following the steps in the "Testing Your Keypad Sounder and Siren" section.
4. To test the zones, activate each detector in turn (e.g., open each door/window or walk in motion detector areas).

On an HS2TCHP keypad, the following message will be displayed when each zone (detector) is activated: "Ready to Force," "Not Ready". Use the zone status button to view which zones are open. The message will disappear when the zones are closed.

Note: Some features described above will not be functional unless enabled by your installer. Ask your installer which features are functional on your system.

Walk Test Mode

The installer can initiate a Walk Test mode for the system. While in Walk Test mode, the Ready, Armed, and Trouble LEDs will flash to indicate that Walk Test is active. When the system automatically terminates the Walk Test mode, it will announce with an audible warning (5 beeps every 10 seconds), beginning five minutes prior to the termination of the test.

Allowing Computer Access To Your System

From time to time, your installer may need to send information to or retrieve information from your security system. Your installer will do this by having a computer call your system over the telephone line. You may need to prepare your system to receive this 'downloading' call. To do this, press Options, User Functions [Master Code], then System Serv/DLS from the Touchscreen. This allows downloading for a limited period of time. During this time, the system will answer incoming downloading calls. For more information on this feature, please ask your installer.

Reference Sheets

Fill out the following information for future reference and store this guide in a safe place.

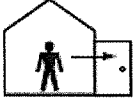
System Information

Enabled?

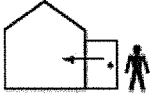
[F] FIRE

[+] Medical

[P] PANIC



The Exit Delay Time is ___ seconds



The Entry Delay Time is ___ seconds

For Service

Central Station Information:

Account #: _____ Telephone #: _____

Installer Information:

Company #: _____ Telephone #: _____

Battery Installation / Service Date:



If you suspect a false alarm signal has been sent to the central monitoring station, call the station to avoid an unnecessary response.

Access Codes (copy as needed)

HS2016/HS2032/HS2064/HS2128 MASTER CODE [01]: _____

Code	Access Code	Code	Access Code	Code	
01		35		69	
02		36		70	
03		37		71	
04		38		72	
05		39		73	
06		40		74	
07		41		75	
08		42		76	
09		43		77	
10		44		78	
11		45		79	
12		46		80	
13		47		81	
14		48		82	
15		49		83	
16		50		84	
17		51		85	
18		52		86	
19		53		87	
20		54		88	
21		55		89	
22		56		90	
23		57		91	
24		58		92	
25		59		93	
26		60		94	
27		61		95	
28		62		96	
29		63		97	
30		64		98	
31		65		99	
32		66		100	
33		67			
34		68			

Sensor / Zone Information (copy as needed)

Sensor	Protected Area	Sensor Type
1		
2		
3		
4		
5		
6		
7		
8		
9		
10		
11		
12		
13		
14		
15		
16		
17		
18		
19		
20		
21		
22		
23		
24		
25		
26		
27		
28		
29		
30		

Guidelines for Locating Smoke Detectors and CO Detectors

The following information is for general guidance only and it is recommended that local fire codes and regulations be consulted when locating and installing smoke and CO alarms.

Smoke Detectors

Research has shown that all hostile fires in homes generate smoke to a greater or lesser extent. Experiments with typical fires in homes indicate that detectable quantities of smoke precede detectable levels of heat in most cases. For these reasons, smoke alarms should be installed outside of each sleeping area and on each storey of the home. The following information is for general guidance only and it is recommended that local fire codes and regulations be consulted when locating and installing smoke alarms. It is recommended that additional smoke alarms beyond those required for minimum protection be installed. Additional areas that should be protected include: the basement; bedrooms, especially where smokers sleep; dining rooms; furnace and utility rooms; and any hallways not protected by the required units. On smooth ceilings, detectors may be spaced 9.1m (30 feet) apart as a guide. Other spacing may be required depending on ceiling height, air movement, the presence of joists, uninsulated ceilings, etc. Consult National Fire Alarm Code NFPA 72, CAN/ULC-S553-02 or other appropriate national standards for installation recommendations.

- Do not locate smoke detectors at the top of peaked or gabled ceilings; the dead air space in these locations may prevent the unit from detecting smoke.
- Avoid areas with turbulent air flow, such as near doors, fans or windows. Rapid air movement around the detector may prevent smoke from entering the unit.
- Do not locate detectors in areas of high humidity.
- Do not locate detectors in areas where the temperature rises above 38°C (100°F) or falls below 5°C (41°F).

Smoke detectors should always be installed in USA in accordance with Chapter 29 of NFPA 72, the National Fire Alarm Code: 29.5.1.1.

Where required by other governing laws, codes, or standards for a specific type of occupancy, approved single- and multiple-station smoke alarms shall be installed as follows:

1. In all sleeping rooms and guest rooms.
2. Outside of each separate dwelling unit sleeping area, within 21 ft (6.4 m) of any door to a sleeping room, with the distance measured along a path of travel.
3. On every level of a dwelling unit, including basements.
4. On every level of a residential board and care occupancy (small facility), including basements and excluding crawl spaces and unfinished attics.
5. In the living area(s) of a guest suite.
6. In the living area(s) of a residential board and care occupancy (small facility).

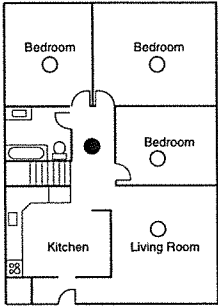


Figure 1

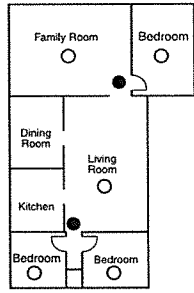


Figure 2

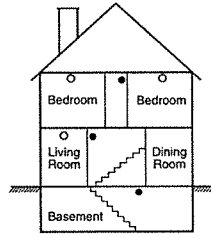
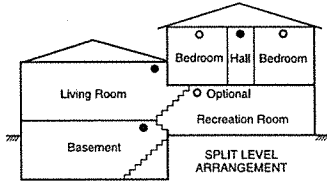


Figure 3



○ Smoke detectors for better protection
● Smoke detectors for minimum protection

Figure 3a

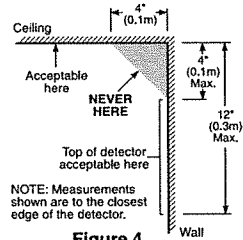
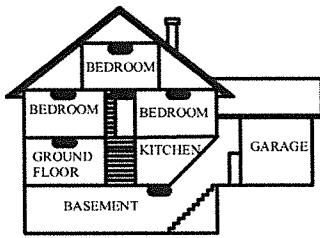


Figure 4

Carbon Monoxide Detectors

Carbon monoxide is colorless, odorless, tasteless, and very toxic. It also moves freely in the air. CO detectors can measure the concentration and sound a loud alarm before a potentially harmful level is reached. The human body is most vulnerable to the effects of CO gas during sleeping hours; therefore, CO detectors should be located in or as near as possible to sleeping areas of the home. For maximum protection, a CO alarm should be located outside primary sleeping areas or on each level of your home. Figure 5 indicates the suggested locations in the home.



● CARBON MONOXIDE DETECTOR

Figure 5

Do NOT place the CO alarm in the following areas:

- Where the temperature may drop below -10°C or exceed 40°C
- Near paint thinner fumes
- Within 5 feet (1.5m) of open flame appliances such as furnaces, stoves and fireplaces
- In exhaust streams from gas engines, vents, flues or chimneys
- Do not place in close proximity to an automobile exhaust pipe; this will damage the detector

PLEASE REFER TO THE CO DETECTOR INSTALLATION AND OPERATING INSTRUCTION SHEET FOR SAFETY INSTRUCTIONS AND EMERGENCY INFORMATION.

Household Fire Safety Audit

Read this section for important information about fire safety. Most fires occur in the home. To minimize this danger, we recommend that a household fire safety audit be conducted and a fire escape plan be developed.

1. Are all electrical appliances and outlets in a safe condition? Check for frayed cords, overloaded lighting circuits, etc. If you are uncertain about the condition of your electrical appliances or household service, have a professional evaluate these units.
2. Are all flammable liquids stored safely in closed containers in a well-ventilated cool area? Cleaning with flammable liquids should be avoided.
3. Are fire-hazardous materials (e.g., matches) well out of reach of children?
4. Are furnaces and wood-burning appliances properly installed, clean and in good working order? Have a professional evaluate these appliances.

Fire Escape Planning

There is often very little time between the detection of a fire and the time it becomes deadly. It is thus very important that a family escape plan be developed and rehearsed.

1. Every family member should participate in developing the escape plan.
2. Study the possible escape routes from each location within the house. Since many fires occur at night, special attention should be given to the escape routes from sleeping quarters.
3. Escape from a bedroom must be possible without opening the interior door.

Consider the following when making your escape plans:

- Make sure that all border doors and windows are easily opened. Ensure that they are not painted shut, and that their locking mechanisms operate smoothly.
- If opening or using the exit is too difficult for children, the elderly or handicapped, plans for rescue should be developed. This includes making sure that those who are to perform the rescue can promptly hear the fire warning signal.
- If the exit is above the ground level, an approved fire ladder or rope should be provided as well as training in its use.
- Exits on the ground level should be kept clear. Be sure to remove snow from exterior patio doors in winter; outdoor furniture or equipment should not block exits.
- Each person should know the predetermined assembly point where everyone can be accounted for (e.g., across the street or at a neighbour's house). Once everyone is out of the building, call the fire department.
- A good plan emphasizes quick escape. Do not investigate or attempt to fight the fire, and do not gather belongings as this can waste valuable time. Once outside, do not re-enter the house. Wait for the fire department.
- Write the fire escape plan down and rehearse it frequently so that should an emergency arise, everyone will know what to do. Revise the plan as conditions change, such as the number of people in the home, or if there are changes to the building's construction.
- Make sure your fire warning system is operational by conducting weekly tests. If you are unsure about system operation, contact your installer.
- We recommend that you contact your local fire department and request further information on fire safety and escape planning. If available, have your local fire prevention officer conduct an in-house fire safety inspection.

License Agreement

IMPORTANT - READ CAREFULLY: DSC Software purchased with or without Products and Components is copyrighted and is purchased under the following license terms:

- This End-User License Agreement ("EULA") is a legal agreement between You (the company, individual or entity who acquired the Software and any related Hardware) and Digital Security Controls, a division of Tyco Safety Products Canada Ltd. ("DSC"), the manufacturer of the integrated security systems and the developer of the software and any related products or components ("HARDWARE") which You acquired.
- If the DSC software product ("SOFTWARE PRODUCT" or "SOFTWARE") is intended to be accompanied by HARDWARE, and is NOT accompanied by new HARDWARE, You may not use, copy or install the SOFTWARE PRODUCT. The SOFTWARE PRODUCT includes computer software, and may include associated media, printed materials, and "online" or electronic documentation.
- Any software provided along with the Software Product that is associated with a separate end-user license agreement is licensed to You under the terms of that license agreement.
- By installing, copying, downloading, storing, accessing or otherwise using the Software Product, You agree unconditionally to be bound by the terms of this EULA, even if this EULA is deemed to be a modification of any previous arrangement or contract. If You do not agree to the terms of this EULA, DSC is unwilling to license the Software Product to You, and You have no right to use it.

SOFTWARE PRODUCT LICENSE

The SOFTWARE PRODUCT is protected by copyright laws and international copyright treaties, as well as other intellectual property laws and treaties. The SOFTWARE PRODUCT is licensed, not sold.

1. GRANT OF LICENSE This EULA grants You the following rights:

- (a) Software Installation and Use - For each license You acquire, You may have only one copy of the SOFTWARE PRODUCT installed.
- (b) Storage/Network Use - The SOFTWARE PRODUCT may not be installed, accessed, displayed, run, shared or used concurrently on or from different computers, including a workstation, terminal or other digital electronic device ("Device") In other words, if You have several workstations, You will have to acquire a license for each workstation where the SOFTWARE will be used.
- (c) Backup Copy - You may make back-up copies of the SOFTWARE PRODUCT, but You may only have one copy per license installed at any given time. You may use the back-up copy solely for archival purposes. Except as expressly provided in this EULA, You may not otherwise make copies of the SOFTWARE PRODUCT, including the printed materials accompanying the SOFTWARE.

2. DESCRIPTION OF OTHER RIGHTS AND LIMITATIONS

- (a) Limitations on Reverse Engineering, Decompilation and Disassembly - You may not reverse engineer, decompile, or disassemble the SOFTWARE PRODUCT, except and only to the extent that such activity is expressly permitted by applicable law notwithstanding this limitation. You may not make any changes or modifications to the Software, without the written permission of an officer of DSC. You may not remove any proprietary notices, marks or labels from the Software Product. You shall institute reasonable measures to ensure compliance with the terms and conditions of this EULA.
- (b) Separation of Components - The Software Product is licensed as a single product. Its component parts may not be separated for use on more than one HARDWARE unit.
- (c) Single INTEGRATED PRODUCT - If You acquired this SOFTWARE with HARDWARE, then the SOFTWARE PRODUCT is licensed with the HARDWARE as a single integrated product. In this case, the SOFTWARE PRODUCT may only be used with the HARDWARE as set forth in this EULA.
- (d) Rental - You may not rent, lease or lend the SOFTWARE PRODUCT. You may not make it available to others or post it on a server or web site.
- (e) Software Product Transfer - You may transfer all of Your rights under this EULA only as part of a permanent sale or transfer of the HARDWARE, provided You retain no copies. You transfer all of the SOFTWARE PRODUCT (including all component parts, the media and printed materials, any upgrades and this EULA), and provided the recipient agrees to the terms of this EULA. If the SOFTWARE PRODUCT is an upgrade, any transfer must also include all prior versions of the SOFTWARE PRODUCT.
- (f) Termination - Without prejudice to any other rights, DSC may terminate this EULA if You fail to comply with the terms and conditions of this EULA. In such event, You must destroy all copies of the SOFTWARE PRODUCT and all of its component parts.
- (g) Trademarks - This EULA does not grant You any rights in connection with any trademarks or service marks of DSC or its suppliers.

3. COPYRIGHT

All title and intellectual property rights in and to the SOFTWARE PRODUCT (including but not limited to any images, photographs, and text incorporated into the SOFTWARE PRODUCT), the accompanying printed materials, and any copies of the SOFTWARE PRODUCT, are owned by DSC or its suppliers. You may not copy the printed materials accompanying the SOFTWARE PRODUCT. All title and intellectual property rights in and to the content which may be accessed through use of the SOFTWARE PRODUCT are the property of the respective content owner and may be protected by applicable copyright or other intellectual property laws and treaties. This EULA grants You no rights to use such content. All rights not expressly granted under this EULA are reserved by DSC and its suppliers.

4. EXPORT RESTRICTIONS

You agree that You will not export or re-export the SOFTWARE PRODUCT to any country, person, or entity subject to Canadian export restrictions.

5. CHOICE OF LAW

This Software License Agreement is governed by the laws of the Province of Ontario, Canada.

6. ARBITRATION

All disputes arising in connection with this Agreement shall be determined by final and binding arbitration in accordance with the Arbitration Act, and the parties agree to be bound by the arbitrator's decision. The place of arbitration shall be Toronto, Canada, and the language of the arbitration shall be English.

7. LIMITED WARRANTY

- (a) NO WARRANTY - DSC PROVIDES THE SOFTWARE "AS IS" WITHOUT WARRANTY. DSC DOES NOT WARRANT THAT THE SOFTWARE WILL MEET YOUR REQUIREMENTS OR THAT OPERATION OF THE SOFTWARE WILL BE UNINTERRUPTED OR ERROR-FREE.
- (b) CHANGES IN OPERATING ENVIRONMENT - DSC shall not be responsible for problems caused by changes in the operating characteristics of the HARDWARE, or for problems in the interaction of the SOFTWARE PRODUCT with non-DSC-SOFTWARE or HARDWARE PRODUCTS.

(c) LIMITATION OF LIABILITY - WARRANTY REFLECTS ALLOCATION OF RISK - IN ANY EVENT, IF ANY STATUTE IMPLIES WARRANTIES OR CONDITIONS NOT STATED IN THIS LICENSE AGREEMENT, DSC'S ENTIRE LIABILITY UNDER ANY PROVISION OF THIS LICENSE AGREEMENT SHALL BE LIMITED TO THE GREATER OF THE AMOUNT ACTUALLY PAID BY YOU TO LICENSE THE SOFTWARE PRODUCT AND FIVE CANADIAN DOLLARS (CAD\$5.00) BECAUSE SOME JURISDICTIONS DO NOT ALLOW THE EXCLUSION OR LIMITATION OF LIABILITY FOR CONSEQUENTIAL OR INCIDENTAL DAMAGES, THE ABOVE LIMITATION MAY NOT APPLY TO YOU.

(d) DISCLAIMER OF WARRANTIES - THIS WARRANTY CONTAINS THE ENTIRE WARRANTY AND SHALL BE IN LIEU OF ANY AND ALL OTHER WARRANTIES, WHETHER EXPRESSED OR IMPLIED (INCLUDING ALL IMPLIED WARRANTIES OF MERCHANTABILITY OR FITNESS FOR A PARTICULAR PURPOSE) AND OF ALL OTHER OBLIGATIONS OR LIABILITIES ON THE PART OF DSC. DSC MAKES NO OTHER WARRANTIES. DSC NEITHER ASSUMES NOR AUTHORIZES ANY OTHER PERSON PURPORTING TO ACT ON ITS BEHALF TO MODIFY OR TO CHANGE THIS WARRANTY. NOR TO ASSUME FOR IT ANY OTHER WARRANTY OR LIABILITY CONCERNING THIS SOFTWARE PRODUCT.

(e) EXCLUSIVE REMEDY AND LIMITATION OF WARRANTY - UNDER NO CIRCUMSTANCES SHALL DSC BE LIABLE FOR ANY SPECIAL, INCIDENTAL, CONSEQUENTIAL OR INDIRECT DAMAGES BASED UPON BREACH OF WARRANTY, BREACH OF CONTRACT, NEGLIGENCE, STRICT LIABILITY, OR ANY OTHER LEGAL THEORY. SUCH DAMAGES INCLUDE, BUT ARE NOT LIMITED TO, LOSS OF PROFITS, LOSS OF THE SOFTWARE PRODUCT OR ANY ASSOCIATED EQUIPMENT, COST OF CAPITAL, COST OF SUBSTITUTE OR REPLACEMENT EQUIPMENT, FACILITIES OR SERVICES, DOWN TIME, PURCHASERS TIME, THE CLAIMS OF THIRD PARTIES, INCLUDING CUSTOMERS, AND INJURY TO PROPERTY.

WARNING: DSC recommends that the entire system be completely tested on a regular basis. However, despite frequent testing, and due to, but not limited to, criminal tampering or electrical disruption, it is possible for this SOFTWARE PRODUCT to fail to perform as expected.

FCC Compliance Statement-

CAUTION: Changes or modifications not expressly approved by DSC could void your authority to use this equipment.

This equipment generates and uses radio frequency energy and if not installed and used properly, in strict accordance with the manufacturer's instructions, may cause interference to radio and television reception. It has been type tested and found to comply with the limits for Class B device in accordance with the specifications in Subpart "B" of Part 15 of FCC Rules, which are designed to provide reasonable protection against such interference in any residential installation. However, there is no guarantee that interference will not occur in a particular installation. If this equipment does cause interference to television or radio reception, which can be determined by turning the equipment off and on, the user is encouraged to try to correct the interference by one or more of the following measures:

- Re-orient the receiving antenna
- Relocate the alarm control with respect to the receiver
- Move the alarm control away from the receiver
- Connect the alarm control into a different outlet so that alarm control and receiver are on different circuits.

If necessary, the user should consult the dealer or an experienced radio/television technician for additional suggestions. The user may find the following booklet prepared by the FCC helpful: "How to Identify and Resolve Radio/Television Interference Problems". This booklet is available from the U.S. Government Printing Office, Washington, D.C. 20402, Stock # 004-000-00345-4.

This Class B digital apparatus complies with CAN ICES-3(b)/NMB-3(b).

EN50131-1 Grade2/Class II

The Model HS2TCHP Keypad has been certified by Telefication according to EN50131-1:2006 + A1:2009, EN50131-3:2009 for Grade 2, Class II.

Note: For EN50131 compliant installations the following functions (initiated from the keypad emergency buttons) have to be disabled:

- Fire Alarm function
- Auxiliary (Medical) Alarm function
- Panic Alarm function

© 2016 Security Products. All Rights Reserved/© 2016 Tyco Security Products. Tous droits réservés/© 2016 Tyco Security Products. Todos los Derechos Reservados/© 2016 Tyco Security Products. Todos os Direitos Reservados.Toronto, Canada • www.dsc.com • Printed in Canada/Imprimé au Canada/Impreso en Canadá/ Impresso no Canadá

The trademarks, logos, and service marks displayed on this document are registered in the United States [or other countries]. Any misuse of the trademarks is strictly prohibited and Tyco International Ltd. will aggressively enforce its intellectual property rights to the fullest extent of the law, including pursuit of criminal prosecution wherever necessary. All trademarks not owned by Tyco International Ltd. are the property of their respective owners, and are used with permission or allowed under applicable laws. Product offerings and specifications are subject to change without notice. Actual products may vary from photos. Not all products include all features. Availability varies by region; contact your sales representative.

Les marques de commerce, logos et marques de service qui apparaissent sur ce document sont enregistrés aux États-Unis [ou dans d'autres pays]. Tout usage inapproprié des marques de commerce est strictement interdit; Tyco International Ltd. entend défendre vivement ses droits de propriété intellectuelle avec toute la rigueur que permet la loi et intentera des poursuites criminelles si nécessaire. Toutes les marques de commerce que ne possède pas Tyco International Ltd. appartiennent à leurs propriétaires respectifs et sont utilisées avec leur permission ou dans le respect des lois en vigueur. Les produits offerts et leurs spécifications peuvent changer sans préavis. Il est possible que les produits diffèrent des images qui les accompagnent. Tous les produits n'offrent pas toutes les caractéristiques. La disponibilité varie selon les régions; communiquez avec votre représentant local.

Las marcas comerciales, logotipos y marcas de servicio exhibidos en este documento son registrados en Estados Unidos [u otros países]. Cualquier mal uso de las marcas comerciales está estrictamente prohibida y Tyco International Ltd. Reforzará agresivamente sus derechos sobre la propiedad intelectual hasta el límite legal, incluyendo la apertura de proceso criminal siempre que sea necesario. Todas las marcas comerciales no adquiridas por Tyco International Ltd. son de propiedad de sus respectivos propietarios y son utilizadas con el permiso o permitidas bajo las leyes aplicables. Las ofertas de productos y especificaciones están sujetas a alteración sin preaviso. Los productos reales pueden ser diferentes de las fotos exhibidas. No todos los productos incluyen todas las funciones. La disponibilidad varía por región; contáctese con su representante de ventas.

As marcas comerciais, logotipos e marcas de serviço exibidos neste documento são registrados nos Estados Unidos [ou outros países]. Qualquer mau uso das marcas comerciais é estritamente proibida e a Tyco International Ltd. irá reforçar agressivamente seus direitos sobre a propriedade intelectual até o limite legal, incluindo a abertura de processo criminal sempre que necessário. Todas as marcas comerciais não adquiridas pela Tyco International Ltd. São de propriedade de seus respectivos proprietários e utilizadas com a permissão ou permitidas sob as leis aplicáveis. As ofertas de produtos e especificações estão sujeitas a mudança sem aviso prévio. Os produtos reais podem ser diferentes das fotos exibidas. Nem todos os produtos incluem todas as funções. A disponibilidade varia por região; entre em contato com o seu representante de vendas.

DSC

From Tyco Security Products



29009786F001