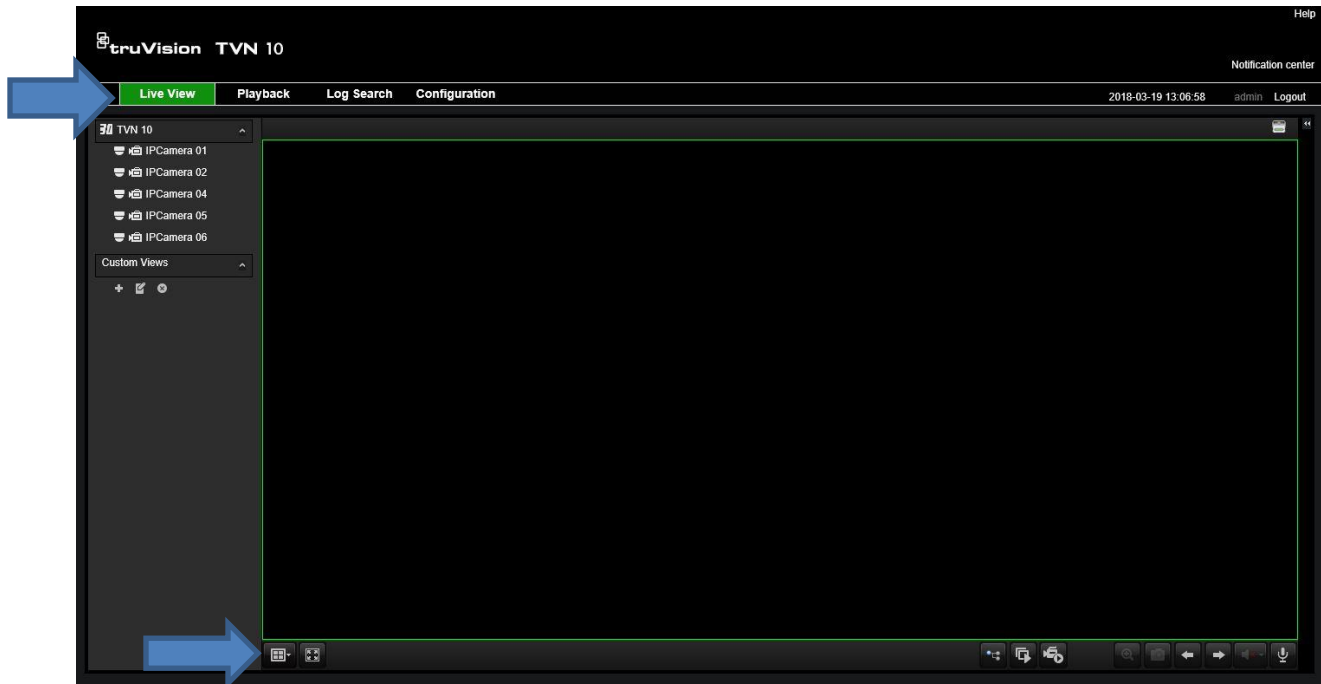


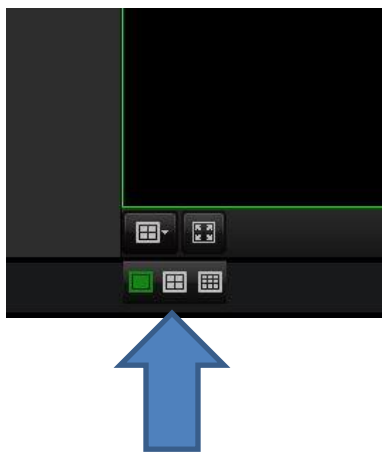
Interlogix - Creating Custom Views

With your Interlogix recorder you can create custom views. These custom views allow you to quickly see groups of live cameras that you use regularly. You can create more than one custom view to meet your needs.

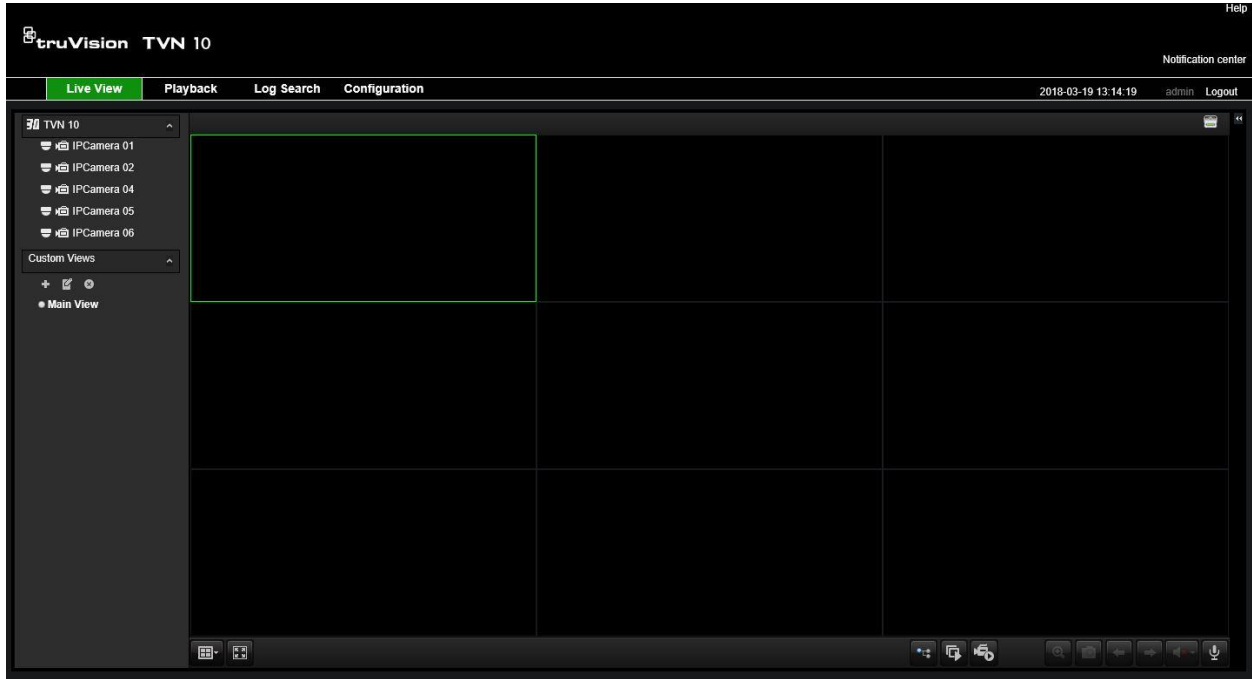
Please go to the live view screen:



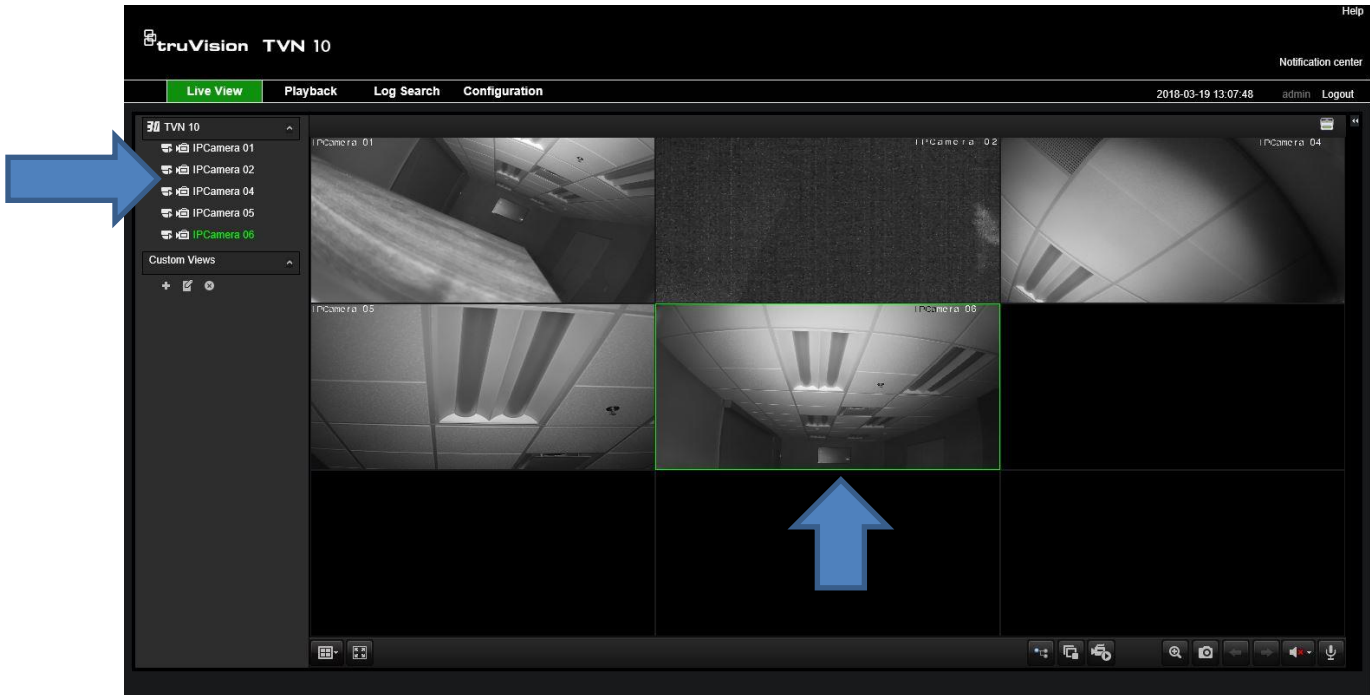
From the dropdown lower left of the main viewing window select the type of view you would like to create.



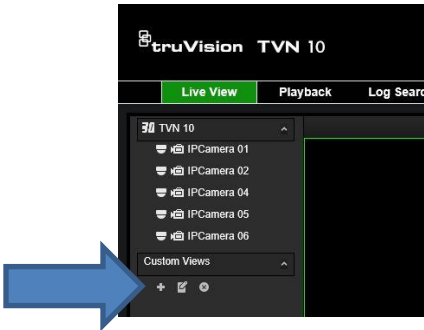
Once you have selected the desire type of view. The main display will show the selected view.



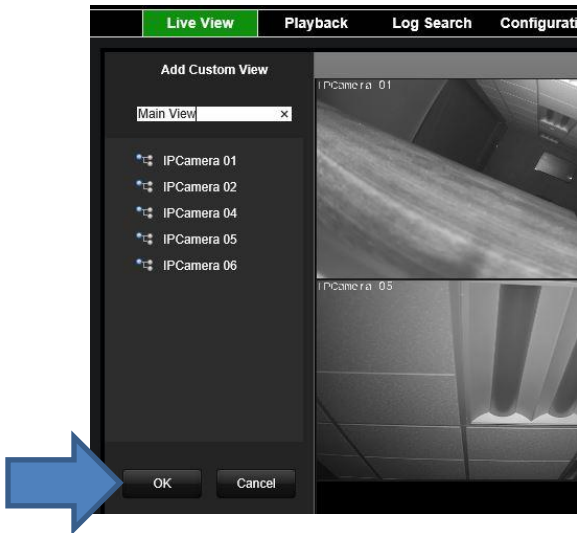
Click on a camera display window and then double click on a camera in the left hand list. Repeat this process until you have all the cameras showing you wish to view.



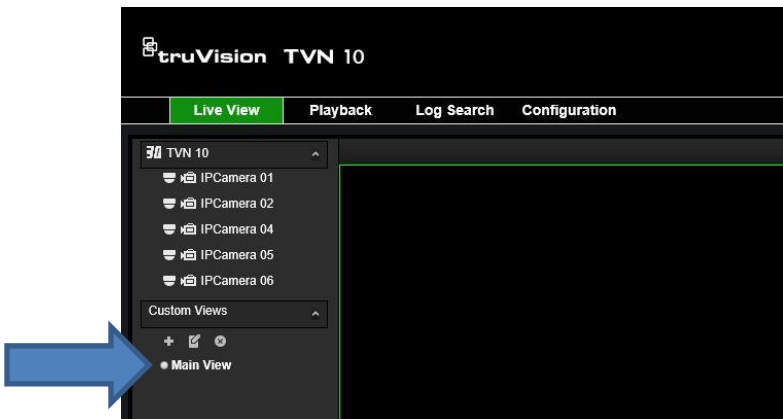
To save this as a custom view. Press on the “+” sign just below custom views on the left hand side of the screen.



Enter a name and press “OK”



Now when you log into the recorder you will see the list of custom views you have created.



Simply double click on the desired custom view and the cameras will display on the main viewing window.